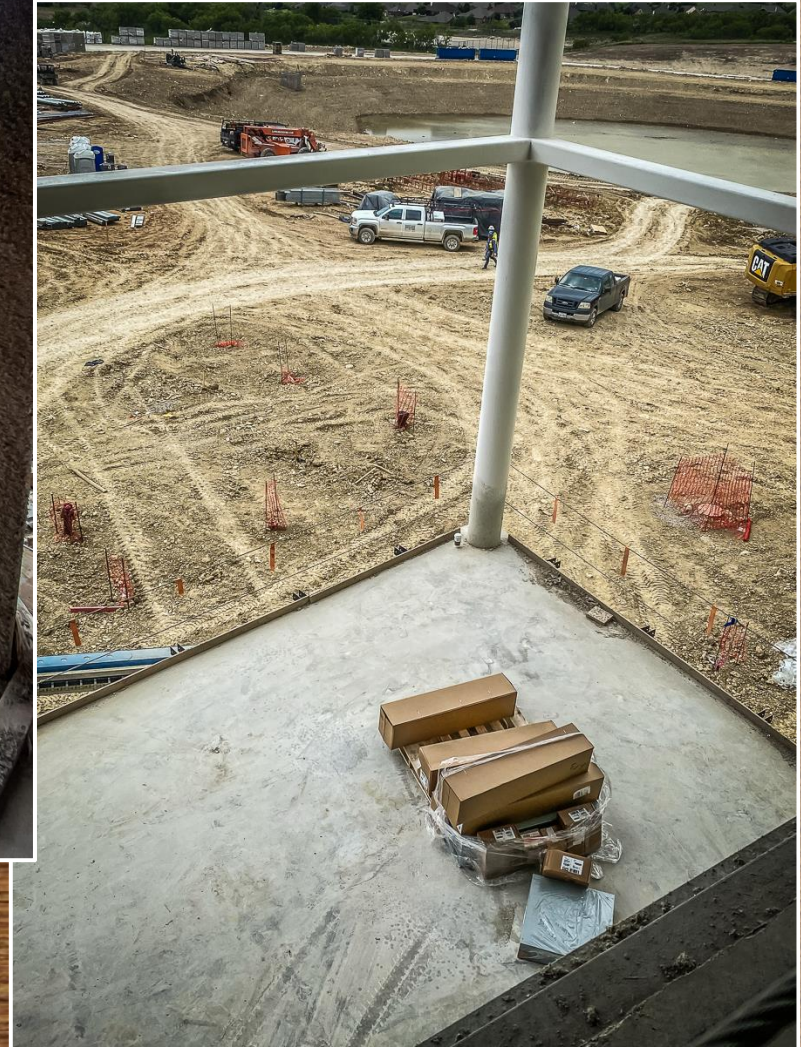
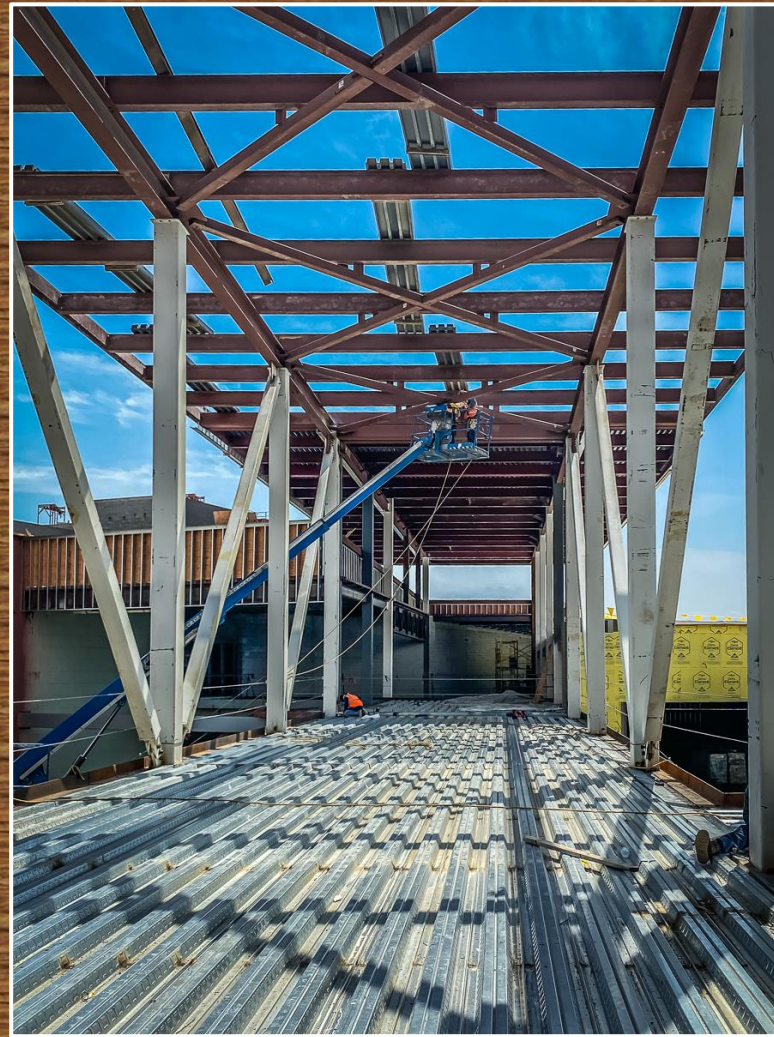




EAGLE MOUNTAIN HS

Work continues on the main academic building.





The connecting bridge from academics to the cafeteria area continues with structural steel installation.





Structural work continues on the home and visitor bleachers and press box. CMU block is being installed in the fieldhouse and is finishing up in the multi-purpose center.



Structural columns and home bleacher concrete continues in the competition gym.

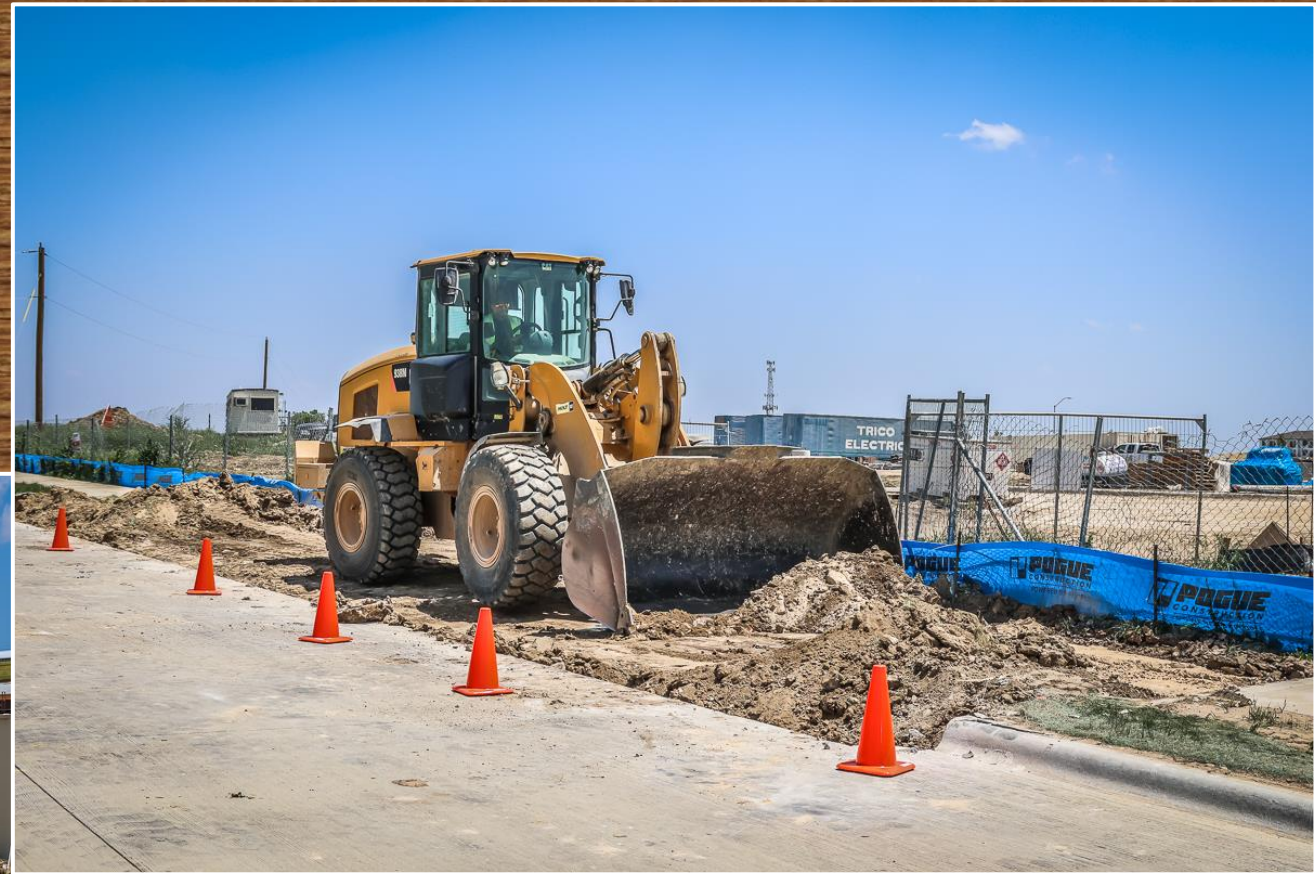




ELIZABETH LOPEZ HATLEY ES



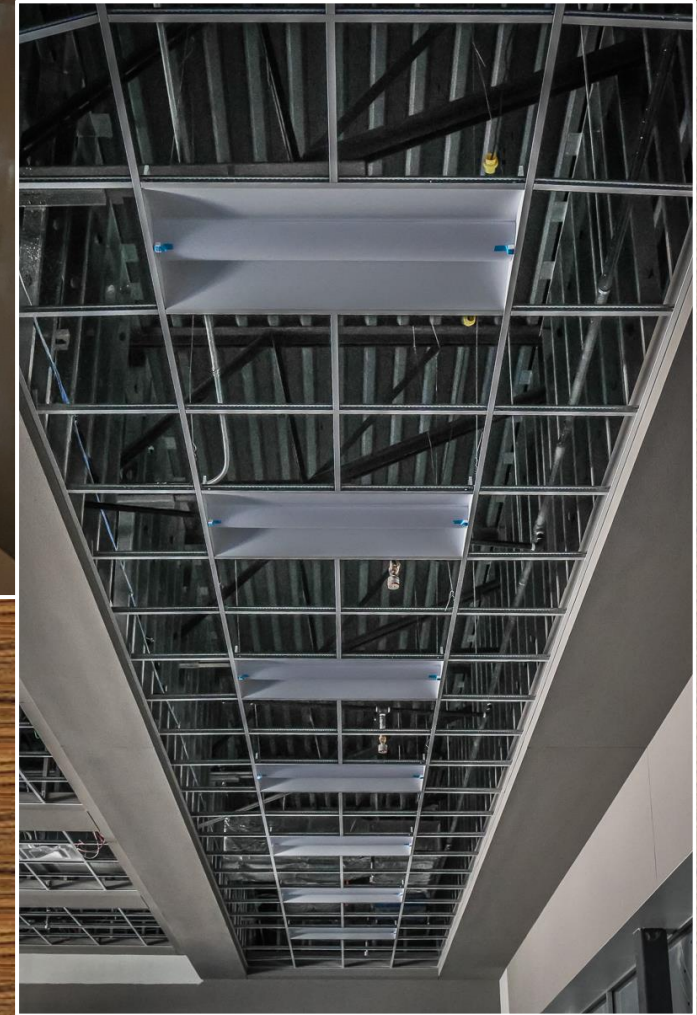
Brick work is complete in academic wing C and is progressing in academic area D.



Driveway approaches around the site are being poured.



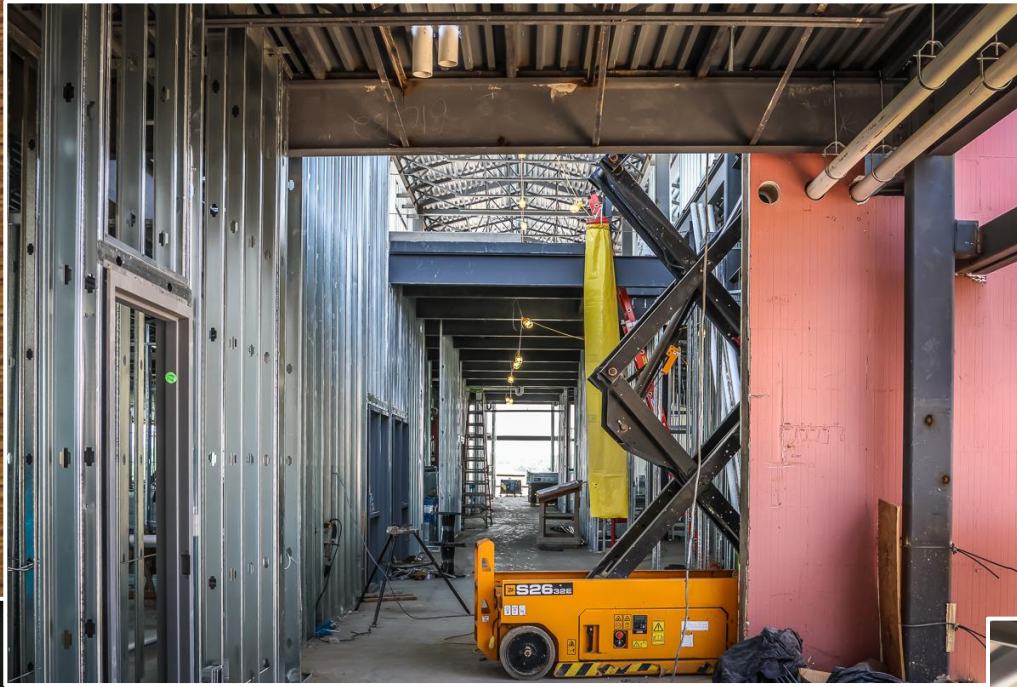
**Administrative area continues with
installation of doors and library glass.**



Tile work is complete in the administrative area and continues in the hallway between the gymnasium and cafeteria. Lighting fixtures have been installed in areas A and B.



Flooring protection is in place in the kitchen as equipment has been installed.



These photos show the different progression from the top and bottom levels in area C and D.